

CLARK LEGACY DRYLAND FARM

GUYMON, OKLAHOMA | 160 ACRES | \$192,000

The Clark Legacy Dryland Farm is a 160-acre, more or less, dryland farming property located in the northwest corner of Texas County, Oklahoma. Featuring productive High Plains soils, paved access, available 3-phase electricity, tenant farming income potential, and seller-owned minerals that are intended to convey, this offering combines productive agricultural utility with a remarkable history of long-term family ownership.

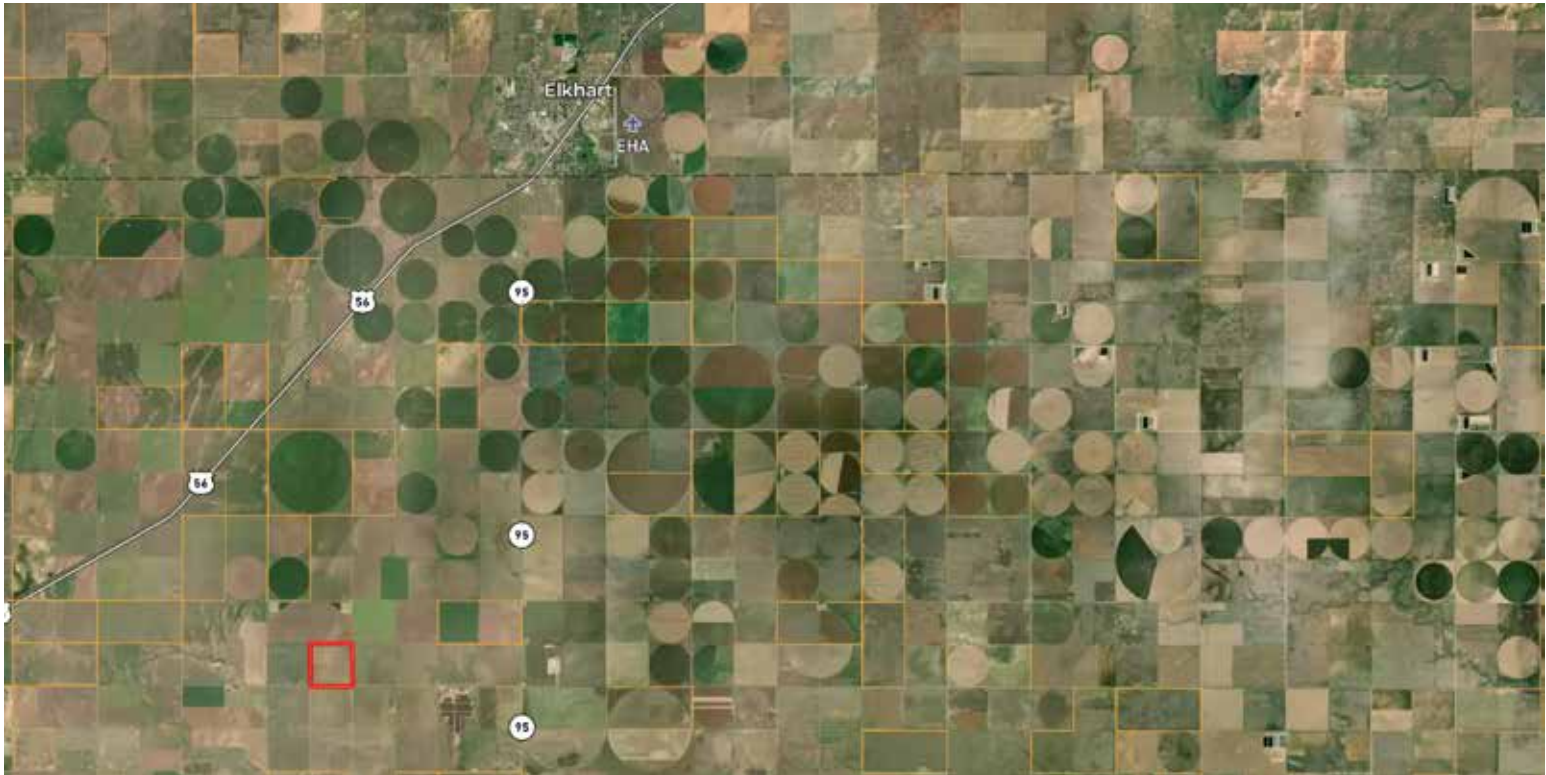
The Clark Legacy Dryland Farm encompasses 160± deeded acres situated in the northwest corner of Texas County, Oklahoma, less than 10 minutes from Elkhart, Kansas, and approximately 30 minutes from Guymon, Oklahoma. The property is legally described as the Southeast Quarter (SE/4) of Section 11, Township 5 North, Range 10 East.

Located within one of the High Plains' most established agricultural regions, the farm features productive soils including Gruver Clay Loam, Perico-Ulysses Complex, and Ulysses Clay Loam. These soil types are well suited for dryland farming operations common to the Oklahoma Panhandle, including wheat and grain sorghum (milo) production.

The property offers excellent paved road access and available three-phase electricity, providing valuable infrastructure that supports efficient agricultural operations and long-term utility. Currently leased to a tenant, the farm presents an opportunity for both producers seeking to expand their operations and investors interested in income-producing cropland.

One of the property's most notable attributes is its remarkable ownership history. The farm has remained in the same family since the late 1860s, offering a rare opportunity to become only the second owner since Oklahoma achieved statehood. All mineral interests owned by the seller will convey with the property.





ZURICK LABRIER, ALC
806-681-9099
zurick@ranchland.com
www.ranchland.com

RANCH  **COMPANY**[®]

* The information contained in this brochure has been obtained from sources believed to be reliable and is believed to be correct, but the owners and brokers do not guarantee its accuracy. Offering is subject to errors, withdrawal without notice. All distances, sizes, capacities, and similar measurements and figures are approximate. All information about properties should be independently verified by interested purchasers. All rights reserved. ©

** A division of Mason & Morse Ranch Co., LLC.